

SNOW REMOVAL ATTACHMENT CATALOG



TAKEUCHI



SNOW REMOVAL ATTACHMENTS

- 72 **BLADES**
- 74 **BLOWERS**
- 76 **BUCKETS**
- 78 **PUSHERS**

ANGLE SNOW BLADE

TSBS72 / TSBS84 / TSBS96 / TSBS108 / TSBS120



- + 4° SIDE-TO-SIDE OSCILLATION FOLLOWS UNEVEN SURFACES
- + HYDRAULIC CROSSOVER RELIEF VALVE PROTECTS THE ATTACHMENT BY ANGLING THE BLADE UPON IMPACT
- + ANGLE THE BLADE 30° LEFT OR RIGHT FROM INSIDE THE CAB
- + TRIP EDGE PROTECTS OPERATOR & EQUIPMENT
- + 5/8 in x 8 in REVERSIBLE STEEL BOLT-ON EDGE ALLOWS 5 1/2 in OF WEAR

MODEL SPECS	TSBS72	TSBS84	TSBS96	TSBS108	TSBS120
Width: Overall, Straight / Full Angle	74.0 in / 64.0 in	86 in / 74 in	98 in / 84 in	110 in / 95 in	120.0 in / 104.0 in
Overall Height	31.0 in				
Overall Depth, Straight	37.5 in				
Blade Angle	(+/-) 30°				
Moldboard Thickness	0.19 in				
Cutting Edge	5/8 in x 8 in Bolt-on				
Blade Oscillation	(+/-) 4°				
Cylinder Bore / Stroke	2.0 in / 8.375 in				
Cylinder Pins / Hinge Pins Diameter	1.25 in / 1.563 in				
Approximate Weight	1,075 lb*	1,075 lb*	1,130 lb*	1,185 lb*	1,185 lb*
*Weight with Steel Edge installed.					
Recommended Loader Capacity	Greater than 1,500 pounds				

OPTIONS AND REPLACEMENT PARTS

STEEL EDGE KIT	MODEL	WEIGHT
	TSEK72	104 lb
	TSEK84	116 lb
	TSEK96	134 lb
	TSEK108	154 lb
	TSEK120	170 lb

POLY EDGE KIT	MODEL	WEIGHT
	TSBS72PYK	27 lb
	TSBS84PYK	32 lb
	TSBS96PYK	36 lb
	TSBS108PYK	41 lb
	TSBS120PYK	44 lb

- + REPLACES STANDARD STEEL CUTTING EDGE
- + 1 in x 7 3/4 in REVERSIBLE, REPLACEABLE REPROCESSED UHMW POLYETHYLENE ALLOWS 5 1/4 in OF TOTAL WEAR

SNOW BLADE SMALL PARTS	MODEL	DESCRIPTION	QTY	WEIGHT
	T6862PP	WASHER	1	0.2 lb
	T6863PP	PIN	1	0.2 lb
	T6854PP	SHOE	1	7 lb

PIN-ON WINGS	MODEL	WIDTH	WEIGHT
	TWGS	12 in	145 lb

- + TWO 12 in WIDE WINGS ANGLED 20° FORWARD FROM THE MOLDBOARD TON INCREASE THE BLADE'S WIDTH BY 21 3/4 in
- + BRACKETS BOLT TO THE SNOW BLADE MOLDBOARD AND TWO PINS MOUNT EACH WING TO BRACKET

V SNOW BLADE

TSBV72 / TSBV84 / TSBV96 / TSBV108 / TSBV120



- + FREE FLOATING DESIGN AUTOMATICALLY ADAPTS TO UNEVEN GROUND IN ALL DIRECTIONS WHILE ALLOWING FULL DOWN PRESSURE
- + HYDRAULIC CROSSOVER RELIEF VALVE PROTECTS THE ATTACHMENT BY ANGLING THE BLADES UPON IMPACT
- + INDEPENDENTLY ANGLE EACH BLADE 30° FORWARD OR BACKWARD FROM INSIDE THE CAB
- + TRIP EDGE PROTECTS OPERATOR & EQUIPMENT
- + 5/8 in x 8 in REVERSIBLE STEEL BOLT-ON EDGE ALLOWS 5 1/2 in OF WEAR

MODEL SPECS	TSBV72	TSBV84	TSBV96	TSBV108	TSBV120
Width: Overall, Straight / Full Angle	74.0 in / 64.0 in	86 in / 74 in	98 in / 84 in	110 in / 95 in	120.0 in / 104.0 in
Width: Full Scoop / Full V	60.0 in / 66.0 in	70 in / 76 in	81 in / 88 in	92 in / 99 in	101.0 in / 108.0 in
Blade Height	31 in				
Overall Depth, Straight / Full V	43.5 in / 41 in				
Blade Angle	(+/-) 30°				
Width at Full Scoop	60 in	70 in	81 in	92 in	101 in
Width at Full V	66 in	76 in	88 in	99 in	108 in
Moldboard Thickness	0.19 in				
Edge: Cutting / Center	5/8 in x 8 in Bolt-on / 1/2 in High Tensile Steel, Bolt-on				
Center Edge	5/8 in x 8 in Bolt-on / 1/2 in High Tensile Steel, Bolt-on				
Blade Oscillation	(+/-) 4°				
Float Link Angle	(+/-) 5°				
Cylinder Bore / Stroke	2 in / 8.375 in				
Cylinder Pins / Hinge Pins Diameter	1.25 in / 1.563 in				
Approximate Weight		1,240 lb*	1,295 lb*	1,350 lb*	
*Weight with steel edge installed.					
Recommended Loader Capacity	Greater than 1,500 pounds				

OPTIONS AND REPLACEMENT PARTS

STEEL EDGE KIT	MODEL	WEIGHT
	TVEK72	135 lb
	TVEK84	151 lb
	TVEK96	167 lb
	TVEK108	185 lb
	TVEK120	198 lb

- + FOR PIN ON WINGS AND SMALL PARTS SPECS, SEE PAGE 72

POLY EDGE KIT	MODEL	WEIGHT
	TSBV72PYK	30 lb
	TSBV84PYK	34 lb
	TSBV96PYK	39 lb
	TSBV108PYK	43 lb
	TSBV120PYK	47 lb

- + REPLACES STANDARD STEEL CUTTING EDGE
- + 1 in x 7 3/4 in REVERSIBLE, REPLACEABLE REPROCESSED UHMW POLYETHYLENE ALLOWS 5 1/4 in OF TOTAL WEAR

SNOW BLOWER

TVBWB60-25 / TVBWB72-25 / TVBWB84-25



- + ANGLED AUGER PADDLES CHEW THROUGH SNOW & CONTINUALLY FEED THE FAN
- + DIRECT DRIVE PARKER® MOTORS WITH RELIEF VALVES
- + ADJUSTABLE & REVERSIBLE POLY SKID SHOES DESIGNED TO HOP OVER SMALL OBSTRUCTIONS
- + 3/16 in FAN HOUSING REDUCES DISTORTION
- + 270° HYDRAULIC CHUTE ROTATION WITH IN CAB DEFLECTOR CONTROL
- + GUARD PROTECTS VALVES & ELECTRICAL COMPONENTS
- + 5/8 in x 6 in REVERSIBLE STEEL BOLT-ON EDGE

MODEL SPECS	TVBWB60-25	TVBWB72-25	TVBWB84-25
Overall Width / Cut Width	66.4 in / 63.9 in	78.4 in / 75.9 in	90.6 in / 88.1 in
Height: Max w. Chute / Cut	58.4 in / 23.5 in		
Overall Depth	39.8 in		
Fan: Diameter / Depth	20 in / 7.2 in		
Auger Diameter	16 in		
Throwing Distance	Up to 30 ft		
Recommended Flow Rate	16 to 25 g/min Standard Flow Only		
Approximate Weight	930 lb	990 lb	1065 lb
Recommended Loader Capacity	Greater than 1,500 lb		

OPTIONS AND REPLACEMENT PARTS

EDGE KIT - PUB VBWB	MODEL	WEIGHT
	TUBEK72	72 lb
	TUBEK84	85 lb

POLY SHOE KIT	MODEL	WEIGHT	QTY
	TBWPYSK	9 lb	PAIR

SNOW BLOWER

TVBW72-25 / TVBW72-HF33 / TVBW72-HF42 / TVBW84-25 / TVBW84-HF33 / TVBW84-HF42



- + ANGLED AUGER PADDLES CHEW THROUGH SNOW & CONTINUALLY FEED THE FAN
- + DIRECT DRIVE EATON® MOTORS WITH RELIEF VALVES
- + ADJUSTABLE & REVERSIBLE POLY SKID SHOES DESIGNED TO HOP OVER SMALL OBSTRUCTIONS
- + 3/16 in FAN HOUSING REDUCES DISTORTION
- + 270° HYDRAULIC CHUTE ROTATION WITH IN CAB DEFLECTOR CONTROL
- + GUARD PROTECTS VALVES & ELECTRICAL COMPONENTS
- + 5/8 in x 8 in REVERSIBLE STEEL BOLT-ON EDGE

MODEL SPECS	TVBW72-25	TVBW72-HF33	TVBW72-HF42	TVBW84-25	TVBW84-HF33	TVBW84-HF42
Overall Width / Cut Width	79.2 in / 76.7 in			91.2 in / 88.7 in		
Height: Max w. Chute / Cut	65 in / 28 in					
Overall Depth	47.9 in					
Fan: Diameter / Depth	24 in / 8 in					
Auger Diameter	18 in					
Throwing Distance	Up to 40 ft					
Recommended Flow Rate: Standard / High	18-25 g/min	25-33 g/min	33-42 g/min	18-25 g/min	25-33 g/min	33-42 g/min
Approximate Weight						
*High Flow motor options add approximately 75 pounds to model weight.						
Recommended Loader Capacity	Greater than 1,500 lb					

OPTIONS AND REPLACEMENT PARTS

EDGE KIT - PUB VBWB	MODEL	WEIGHT
	TBWEK72	72 lb
	TBWEK84	85 lb

POLY SHOE KIT	MODEL	WEIGHT	QTY
	TBWPYSK	9 lb	PAIR

SNOW BUCKETS / LIGHT MATERIAL

TMSHV84B / TMSHV96B / TMSHV101B

- + 3/16 in SHELL & 1/4 in SIDE PLATES
- + 3/8 in VERTICAL BRACES INSIDE BUCKET
- + 3/8 in SIDE EDGES & GUSSETS
- + WINDOWS FOR BETTER OPERATOR VISIBILITY. AVAILABLE WITH SOLID BACK
- + 3/4 in x 6 in WELD-ON EDGE



MODEL SPECS	TMSHV84B	TMSHV96B	TMSHV101B
Width: Overall / Inside	85.5 in / 83.3 in	97.5 in / 95.3 in	101.5 in / 99.3 in
Overall Height	29 in		
Depth: Overall / Inside	40.6 in / 39.9 in		
Window Height	8 in		
Capacity: Struck / Heaped (Cubic Feet)	31.0 cu. ft. / 37.2 cu. ft.	35.5 cu. ft. / 42.6 cu. ft.	37 cu. ft. / 44.5 cu. ft.
Bucket Back Angle	66°		
Shell Thickness	0.19 in		
Side Plate Thickness	0.25 in		
Structural Wear Bars Under Bucket (1/2" x 4")	5		
Approximate Weight	760 lb	825 lb	850 lb
Recommended Loader Capacity	Greater than 1,800 pounds		

OPTIONS AND REPLACEMENT PARTS

BOLT ON EDGE INSTALLED	MODEL	HOLES/BOLTS	WEIGHT
	TBEV84H	14	113 lb
	TBEV90H	15	121 lb
	TBEV96H	16	129 lb
	TBEV101H	17	133 lb

SNOW BUCKETS / LIGHT MATERIAL

TSBHV84B / TSBHV96B / TSBHV101B

- + EXTRA BRACE PLATE INSIDE BUCKET FOR ADDED STRENGTH
- + 1/4 in SHELL & SIDE PLATES
- + 1/2 in VERTICAL BRACES INSIDE BUCKET
- + 3/8 in SIDE EDGES & GUSSETS
- + WINDOWS FOR BETTER OPERATOR VISIBILITY. AVAILABLE WITH SOLID BACK
- + 3/4 in x 6 in WELD-ON EDGE



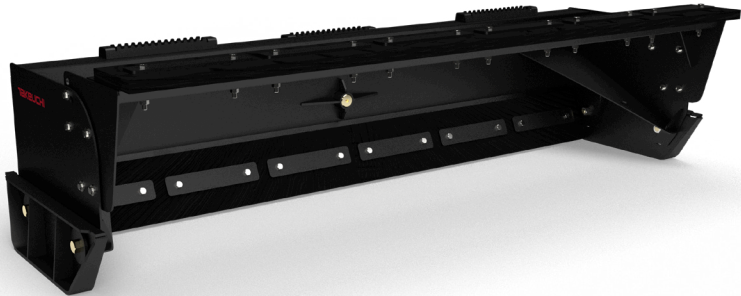
MODEL SPECS	TSBHV84B	TSBHV96B	TSBHV101B
Width: Overall / Inside	85.5 in / 83.3 in	97.5 in / 95.3 in	101.5 in / 99.3 in
Overall Height	40.5 in		
Depth: Overall / Inside	45.5 in / 43.5 in		
Window Height	12 in		
Capacity: Struck / Heaped (Cubic Feet)	43.2 cu. ft. / 51.8 cu. ft.	49.4 cu. ft. / 59.3 cu. ft.	52.2 cu. ft. / 62.6 cu. ft.
Bucket Back Angle	66°		
Shell Thickness	0.25 in		
Side Plate Thickness	0.25 in		
Structural Wear Bars Under Bucket (1/2" x 4")	5		
Approximate Weight	1,095 lb	1,195 lb	1,225 lb
Recommended Loader Capacity	Greater than 2,400 pounds		

OPTIONS AND REPLACEMENT PARTS

BOLT ON EDGE INSTALLED	MODEL	HOLES/BOLTS	WEIGHT
	TBEV84H	14	113 lb
	TBEV90H	15	121 lb
	TBEV96H	16	129 lb
	TBEV101H	17	133 lb

LOW PROFILE SNOW PUSHER

TLSWP84 / TLSWP96 / TLSWP108 / TLSWP120



- + SHORTER DESIGN FOR BETTER VISIBILITY
- + DESIGNED TO AUTOMATICALLY KEEP PUSHER WEIGHT ON EDGE FOR CONSISTENT CLEAN-UP & LESS MAINTENANCE
- + REVERSIBLE, SELF-LEVELING AR400 SKID SHOES WITH TAPERED OUTSIDE EDGE TO PROTECT FROM SIDE IMPACTS
- + 4° SIDE-TO-SIDE OSCILLATION FOLLOWS UNEVEN SURFACES

MODEL SPECS	TLSWP84	TLSWP96	TLSWP108	TLSWP120
Width: Overall / Inside	92.3 in / 86 in	104.3 in / 98 in	116.3 in / 110 in	124.5 in / 119.0 in
Overall Height	27.5 in			
Depth: Overall / Inside	39.5 in / 30 in			
Pusher Ocillation	(+/-) 4°			
Cutting Edge	1.5 in x 10 in Rubber			
Approximate Weight	915 lb	960 lb	1,005 lb	1,035 lb
Recommended Loader Capacity	Greater than 1,500 pounds			

OPTIONAL PULL BACK

DESCRIPTION	TSP84	TSP96	TSP108	TSP120
Overall Pull Back Width	88.0 in	100.0 in	112.0 in	119.0 in
Inside Pull Back Width	86.0 in	98.0 in	110.0 in	117.0 in
Cutting Edge	1 1/2 in x 10 in Rubber			
Approximate Weight	210 lb	235 lb	255 lb	275 lb

OPTIONS AND REPLACEMENT PARTS

RUBBER EDGE KIT	MODEL	WEIGHT
	TSWP84RK	98 lb
	TSWP96RK	112 lb
	TSWP108RK	126 lb
	TSWP120RK	140 lb

PULL BACK RUBBER EDGE KIT	MODEL	WEIGHT
	TSP84RK	98 lb
	TSP96RK	112 lb
	TSP108RK	126 lb
	TSP120RK	140 lb

SNOW PUSHER

TSWP84 / TSWP96 / TSWP108 / TSWP120



- + FREE FLOATING DESIGN AUTOMATICALLY ADAPTS TO UNEVEN GROUND IN ALL DIRECTIONS
- + DESIGNED TO AUTOMATICALLY KEEP PUSHER WEIGHT ON EDGE FOR CONSISTENT CLEAN-UP & LESS MAINTENANCE
- + REVERSIBLE, SELF-LEVELING AR400 SKID SHOES WITH TAPERED OUTSIDE EDGE TO PROTECT FROM SIDE IMPACTS

MODEL SPECS	TSWP84	TSWP96	TSWP108	TSWP120
Width: Overall / Inside	90 in / 86 in	102 in / 98 in	114 in / 110 in	122.5 in / 119.0 in
Overall Height	40.8 in			
Depth: Overall / Inside	51.2 in / 38.3 in			
Pusher Ocillation	(+/-) 4°			
Frame Link Float	3 in			
Cutting Edge	1.5 in x 10 in Rubber			
Approximate Weight	1,305 lb	1,365 lb	1,425 lb	1,465 lb
Recommended Loader Capacity	Greater than 1,800 pounds			

OPTIONAL PULL BACK

DESCRIPTION	TSP84	TSP96	TSP108	TSP120
Overall Pull Back Width	88.0 in	100.0 in	112.0 in	119.0 in
Inside Pull Back Width	86.0 in	98.0 in	110.0 in	117.0 in
Cutting Edge	1 1/2 in x 10 in Rubber			
Approximate Weight	210 lb	235 lb	255 lb	275 lb

OPTIONS AND REPLACEMENT PARTS

RUBBER EDGE KIT	MODEL	WEIGHT
	TSWP84RK	98 lb
	TSWP96RK	112 lb
	TSWP108RK	126 lb
	TSWP120RK	140 lb

PULL BACK RUBBER EDGE KIT	MODEL	WEIGHT
	TSP84RK	98 lb
	TSP96RK	112 lb
	TSP108RK	126 lb
	TSP120RK	140 lb

STEEL EDGE SNOW PUSHER

TSESP84 / TSESP96 / TSESP108 / TSESP120



- + DESIGNED TO AUTOMATICALLY KEEP PUSHER WEIGHT ON EDGE FOR CONSISTENT CLEAN-UP & LESS MAINTENANCE
- + REVERSIBLE, SELF-LEVELING AR400 SKID SHOES WITH TAPERED OUTSIDE EDGE TO PROTECT FROM SIDE IMPACTS
- + 4° SIDE-TO-SIDE OSCILLATION FOLLOWS UNEVEN SURFACES
- + TRIP EDGE PROTECTS OPERATOR & EQUIPMENT
- + HD FRAME BRACING WITH BEVELED INSIDE GUSSETS INCREASES SIDE PLATE STRENGTH

MODEL SPECS	TSESP84	TSESP96	TSESP108	TSESP120
Width: Overall / Inside	92.5 in / 86.5 in	104.5 in / 98.5 in	116.5 in / 110.5 in	125.4 in / 119.4in
Overall Height	31.7 in			
Depth: Overall / Inside	54.4 in / 32.2 in			
Pusher Ocillation	(+/-) 4º			
Moldboard Thickness	0.19 in			
Cutting Edge	5/8 in x 8 in Steel			
Approximate Weight	1,210 lb	1,275 lb	1,340 lb	1380 lb
Recommended Loader Capacity	Greater than 1,500 pounds			

OPTIONAL STEEL EDGE PULL BACK

DESCRIPTION	TSEP84	TSEP96	TSEP108	TSEP120
Overall Pull Back Width	86.0 in	98.0 in	109.9 in	119.0 in
Inside Pull Back Width	85.4 in	97.4 in	109.4 in	118.3 in
Cutting Edge	5/8 in x 8 in Steel			
Approximate Weight	265 lb	295 lb	325 lb	350 lb

OPTIONS AND REPLACEMENT PARTS

STEEL EDGE KIT	MODEL	WEIGHT
	TSESPEK84	111 lb
	TSESPEK96	129 lb
	TSESPEK108	149 lb
	TSESPEK120	165 lb

PULL BACK STEEL EDGE KIT	MODEL	WEIGHT
	TSEPEK84	111 lb
	TSEPEK96	129 lb
	TSEPEK108	149 lb
	TSEPEK120	165 lb






519 BONNIE VALENTINE WAY | PENDERGRASS, GA 30567 | 706.693.3600

©2023 Takeuchi Manufacturing [U.S.], Ltd. All Rights Reserved. Printed in the U.S.A. In accordance with our established policy of continued improvement.
FORM: Takeuchi Snow Removal Attachment Catalog

PROPOSITION 65

 **WARNING:** This product can expose you to chemicals including Cadmium, which is known to the State of California to cause cancer and birth defects or other reproductive harm. For more information go to www.P65Warnings.ca.gov.