

# **Takeuchi**

## **Attachment Catalog Snow Removal**



**Takeuchi, the right choice in attachments**

Mulchers, Stump Grinders, Buckets, Grapples, Augers, Brooms, and many more options to fit all your application needs.



# Takeuchi Attachment Catalog

## Table of Contents

70	<b>SNOW REMOVAL</b>
72	Angle Snow Blades
74	V Snow Blades
76	Snow Blowers
78	Snow Buckets
80	Low Profile Snow Pushers
82	Snow Pusher
84	Steel Edge Snow Pusher

# Snow Removal





# Angle Snow Blade

TSBS84 / TSBS96 / TSBS108



- **Hydraulic Crossover Relief Valve**  
Features hydraulic crossover relief valve, which protects the attachment by absorbing shock by angling the entire blade if a curb or other object is hit.
- Design allows the blade to angle +/- 30° in either direction to windrow snow.
  - Trip edge protects operator and equipment. Reversible, replaceable steel cutting edge.
  - Side-to-side oscillation allows the blade to maintain constant contact with uneven surfaces.

MODEL SPECS	TSBS84	TSBS96	TSBS108
Width: Overall, Straight / Full Angle	86" / 74"	98" / 84"	110" / 95"
Overall Height	31"	31"	31"
Overall Depth, Straight	37.5"	37.5"	37.5"
Blade Angle	(+/-) 30°	(+/-) 30°	(+/-) 30°
Moldboard Thickness	0.19"	0.19"	0.19"
Cutting Edge	5/8" x 8" Bolt-on	5/8" x 8" Bolt-on	5/8" x 8" Bolt-on
Blade Oscillation	(+/-) 4°	(+/-) 4°	(+/-) 4°
Cylinder Bore / Stroke	2" / 8.375"	2" / 8.375"	2" / 8.375"
Cylinder Pins / Hinge Pins Diameter	1.25" / 1.563"	1.25" / 1.563"	1.25" / 1.563"
Approximate Weight	1,075 lb*	1,130 lb*	1,185 lb*
Recommended Loader Capacity	Greater than 1,500 pounds		

\*Weight with steel edge installed.



31"	1,020 - 1,225 lb
Blade Height	Overall Weight (varies by model)
Greater Than 1,500 lb	
Recommended Loader Capacity	

## Options and Replacement Parts

Pin-on Wings for SBS,SBV	Model	Width	Weight
	TWGS	12"	145 lb

- Two 12" wide wings angled 20° forward from the moldboard to increase the blade's width by 21 3/4".
- Brackets bolt to the snow blade moldboard and two pins mount each wing to the bracket.

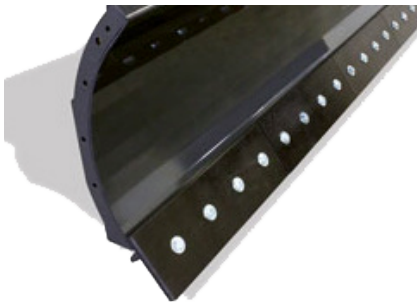


Angle Snow Blade Steel Edge Kit	Model	Weight
	TSEK84	116 lb
	TSEK96	134 lb
	TSEK108	154 lb



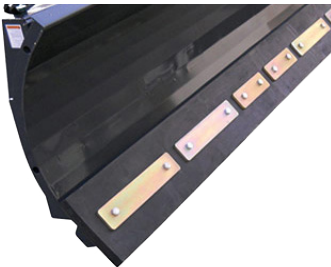
Angle Snow Blade Poly Edge Kit	Model	Weight
	TSBS84PYK	32 lb
	TSBS96PYK	36 lb
	TSBS108PYK	41 lb

- Replaces standard steel cutting edge.
- 1" x 7 3/4 " reversible, replaceable, reprocessed UHMW polyethylene allows 5 1/4" of total wear.



Angle Snow Blade Rubber Edge Kit	Model	Weight
	TSBS84RK	103 lb
	TSBS96RK	117 lb
	TSBS108RK	131 lb

- Replaces standard steel cutting edge.
- 1 1/2" x 10 " reversible, replaceable, rubber edge allows 7" of total wear.



Snow Blade Washer, Pin, Shoe	Model	Description	Qty	Weight
	T6862PP	Washer	1	0.2 lb
	T6863PP	Pin	1	0.2 lb
	T6854PP	Shoe	1	7 lb

WARNING: Proposition 65 - See back cover for details



V Snow Blade

TSVB84 / TSVB96 / TSVB108

31" Blade Height

1,065 - 1,390 lb Overall Weight (varies by model)

Greater Than 1,500 lb Recommended Loader Capacity



Two Bolt-On Edges

5/8" x 8" reversible, replaceable steel edges allow 5 1/2" of total wear.

Trip Edge Protection

Protects operator and equipment.

Hyd. Sequence Relief Valves

Help to protect the attachment by transferring shock from one wing to another when curbs or objects are hit.



Side-to-Side Oscillation

Allows the blade to maintain constant contact with uneven surfaces.

Floating Frame Link

Maintains full blade contact when in scoop and V positions, while allowing full down pressure in straight and angled positions.

MODEL SPECS	TSVB84	TSVB96	TSVB108
Width: Overall, Straight / Full Angle	86" / 74"	98" / 84"	110" / 95"
Width: Full Scoop / Full V	70" / 76"	81" / 88"	92" / 99"
Blade Height	31"	31"	31"
Overall Depth, Straight / Full V	43.5" / 41"	43.5" / 41"	43.5" / 41"
Blade Angle	(+/-) 30 <sup>0</sup>	(+/-) 30 <sup>0</sup>	(+/-) 30 <sup>0</sup>
Moldboard Thickness	0.19"	0.19"	0.19"
Edge: Cutting / Center	5/8" x 8" Bolt-on / 1/2" High Tensile Steel, Bolt-on		
Blade Oscillation	(+/-) 4 <sup>0</sup>	(+/-) 4 <sup>0</sup>	(+/-) 4 <sup>0</sup>
Float Link Angle	(+/-) 5 <sup>0</sup>	(+/-) 5 <sup>0</sup>	(+/-) 5 <sup>0</sup>
Cylinder Bore / Stroke	2" / 8.375"	2" / 8.375"	2" / 8.375"
Cylinder Pins / Hinge Pins Diameter	1.25" / 1.563"	1.25" / 1.563"	1.25" / 1.563"
Approximate Weight	1,240 lb*	1,295 lb*	1,350 lb*
Recommended Loader Capacity	Greater than 1,500 pounds		
*Weight with steel edge installed.			

Options and Replacement Parts

Pin-on Wings for SBS,SBV	Model	Width	Weight
	TWGS	12"	145 lb

- Two 12" wide wings angled 20<sup>0</sup> forward from the moldboard to increase the blade's width by 21 3/4".
- Brackets bolt to the snow blade moldboard and two pins mount each wing to the bracket.

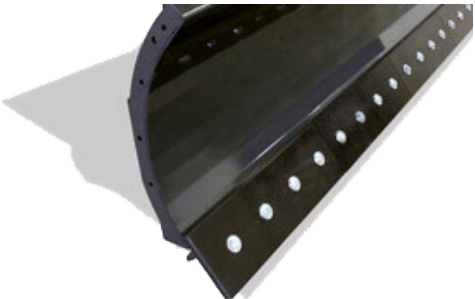


Snow Blade Steel Edge Kit	Model	Weight
	TVEK84	151 lb
	TVEK96	167 lb
	TVEK108	185 lb



Snow Blade Poly Edge Kit	Model	Weight
	TSBV84PYK	34 lb
	TSBV96PYK	39 lb
	TSBV108PYK	43 lb

- Replaces standard steel cutting edge.
- 1" x 7 3/4 " reversible, replaceable, reprocessed UHMW polyethylene allows 5 1/4" of total wear.



Snow Blade Washer, Pin, Shoe	Model	Description	Qty	Weight
	T6862PP	Washer	1	0.2 lb
	T6863PP	Pin	1	0.2 lb
	T6854PP	Shoe	1	7 lb





Snow Blower

TVBWB72-25

Hydraulic Chute

Rotates 270° and deflector angle allows precise snow placement.

Optimal Auger Location

Continuously feeds the partially enclosed fan to ensure max snow volume exits the chute.

Heavy Duty Fan Protection

3/16" metal surrounding the fan reduces distortion from rocks and debris, resulting in longer blower life.

Direct Drive Motor

Two USA made Parker® motors with hydraulic pressure relief protection ensures optimum performance and longevity.

Bolt-On Edge

5/8" x 6" reversible, replaceable edge.

Poly Skid Shoes

Reversible, replaceable and prevent surface marks.

30' Max Throwing Distance	23.5" Cut Height	16 to 25 GPM One Motor Option Standard Flow Only
Greater Than 1,500 lb Recommended Loader Capacity		

- Electric control comes standard on the TVBWB72 Snow Blower.

MODEL SPECS	TVBWB72-25
Overall Width / Cut Width	75.9"
Height Max with Chute / Cut	58.4" / 23.5"
Overall Depth	39.8"
Fan: Diameter / Depth	20" / 7.2"
Auger Diameter	16"
Throwing Distance	Up to 30'
Recommended Flow Rate	16 to 25 GPM
Approximate Weight	990 lb
Recommended Loader Capacity	Greater than 1,500 lb

Edge Kit - PUB VBWB	Model	Weight
	TUBEK72	72 lb
	TUBEK85	85 lb

Poly Shoe Kit	Model	Weight	Qty
	TBWPYSK	9 lb	Pair



WARNING: Proposition 65 - See back cover for details

Snow Blower

TVBW72 / TVBW84

Hydraulic Chute

Rotates 270° and deflector angle allows precise snow placement.

Optimal Auger Location

Continuously feeds the partially enclosed fan to ensure max snow volume exits the chute.

Heavy Duty Fan Protection

3/16" metal surrounding the fan reduces distortion from rocks and debris, resulting in longer blower life.

Direct Drive Motors

Two USA made Parker® motors with hydraulic pressure relief protection ensures optimum performance and longevity.

40' Max Throwing Distance	28" Cut Height	14 to 42 GPM Four Motor Options High Flow Available
Greater Than 1,500 lb Recommended Loader Capacity		

- Electric control comes standard on the TVBW72 & TVBW84 Snow Blowers.

MODEL SPECS	TVBW72	TVBW84	TVBW84-HF33	TVBW84-HF42
Overall Width / Cut Width	77"	89"	88.1"	88.1"
Height Max with Chute / Cut	65" / 28"	65" / 28"	58.4"	58.4"
Overall Depth	47.9"	47.9"	39.8"	39.8"
Fan: Diameter / Depth	24" / 8"	24" / 8"	20"	20"
Auger Diameter	18"	18"	16"	16"
Throwing Distance	Up to 40'			
Recommended Flow Rate: Standard / High	14-25 GPM / 25-42 GPM		33 GPM / 42 GPM	
Approximate Weight	1,220* lb	1,300* lb	1,065 lb	1,065 lb
Recommended Loader Capacity	Greater than 1,500 lb			

\*High flow motor options add approximately 75 lb to model weight.

Edge Kit - PUB VBWB	Model	Weight
	TBWEK72	99 lb
	TBWEK84	111 lb

Poly Shoe Kit	Model	Weight	Qty
	TBWPYSK	9 lb	Pair

WARNING: Proposition 65 - See back cover for details

Snow Buckets / Light Material

TMSHV84 / TMSHV96 / TMSHV101



84" to 101"  
Available Widths

Up to 44 cu. ft.  
Struck Capacity  
(varies by model)

Greater Than 1,800 lb  
Recommended Loader Capacity

- High capacity design allows large volumes of snow, mulch or other light materials to be hauled per load.
- 3/16" thick shell and 1/4" side plates.
- Two, 3/8" thick vertical braces inside bucket make it more rigid.
- 3/8" thick side edges and gussets for extra durability.
- 8" tall windows cut into the back to increase operator visibility.

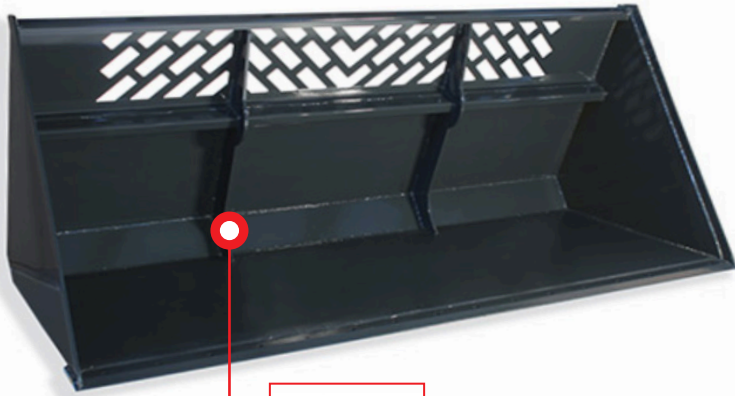
MODEL SPECS	TMSHV84	TMSHV96	TMSHV101
Width: Overall / Inside	85.5" / 83.3"	97.5" / 95.3"	101.5" / 99.3"
Overall Height	29"	29"	29"
Depth: Overall / Inside	40.6" / 39.9"	40.6" / 39.9"	40.6" / 39.9"
Window Height	8"	8"	8"
Capacity: Struck / Heaped (Cubic Feet)	31.0 cu. ft. / 37.2 cu. ft.	35.5 cu. ft. / 42.6 cu. ft.	37 cu. ft. / 44.5 cu. ft.
Bucket Back Angle	66°	66°	66°
Shell Thickness	.19"	.19"	.19"
Side Plate Thickness	.25"	.25"	.25"
Structural Wear Bars Under Bucket (1/2" x 4")	5	5	5
Approximate Weight	765 lb	830 lb	850 lb
Recommended Loader Capacity	Greater than 1,800 pounds		



Bolt-on Edge Installed	Model	Holes/Bots	Weight
	TBEV84A	14	113 lb
	TBEV96A	16	129 lb
	TBEV101A	17	133 lb

Snow Buckets / Light Material

TSBHV84 / TSBHV96 / TSBHV101



Extra Brace  
Plate for added  
strength

- High capacity design allows large volumes of snow, mulch or other light materials to be hauled per load.
- 1/4" thick shell and side plates.
- Two, 1/2" thick vertical braces inside bucket make it more rigid.
- 3/8" thick side edges and gussets for extra durability.
- 12" tall windows cut into the back to increase operator visibility.
- 3/4" x 6" weld-on cutting edge with holes for optional Bolt-On Edge.

MODEL SPECS	TMSHV84	TMSHV96	TMSHV101
Width: Overall / Inside	85.5" / 83.3"	97.5" / 95.3"	101.5" / 99.3"
Overall Height	40.5"	40.5"	40.5"
Depth: Overall / Inside	45.5" / 43.5"	45.5" / 43.5"	45.5" / 43.5"
Window Height	12"	12"	12"
Capacity: Struck / Heaped (Cubic Feet)	43.2 cu. ft. / 51.8 cu. ft.	49.4 cu. ft. / 59.3 cu. ft.	52.2 cu. ft. / 62.6 cu. ft.
Bucket Back Angle	66°	66°	66°
Shell Thickness	.25"	.25"	.25"
Side Plate Thickness	.25"	.25"	.25"
Structural Wear Bars Under Bucket (1/2" x 4")	5	5	5
Approximate Weight	1,030 lb	1,180 lb	1,250 lb
Recommended Loader Capacity	Greater than 2,400 pounds		

Bolt-on Edge Installed	Model	Holes/Bots	Weight
	TBEV84A	14	113 lb
	TBEV96A	16	129 lb
	TBEV101A	17	133 lb



84" to 101"  
Available Widths

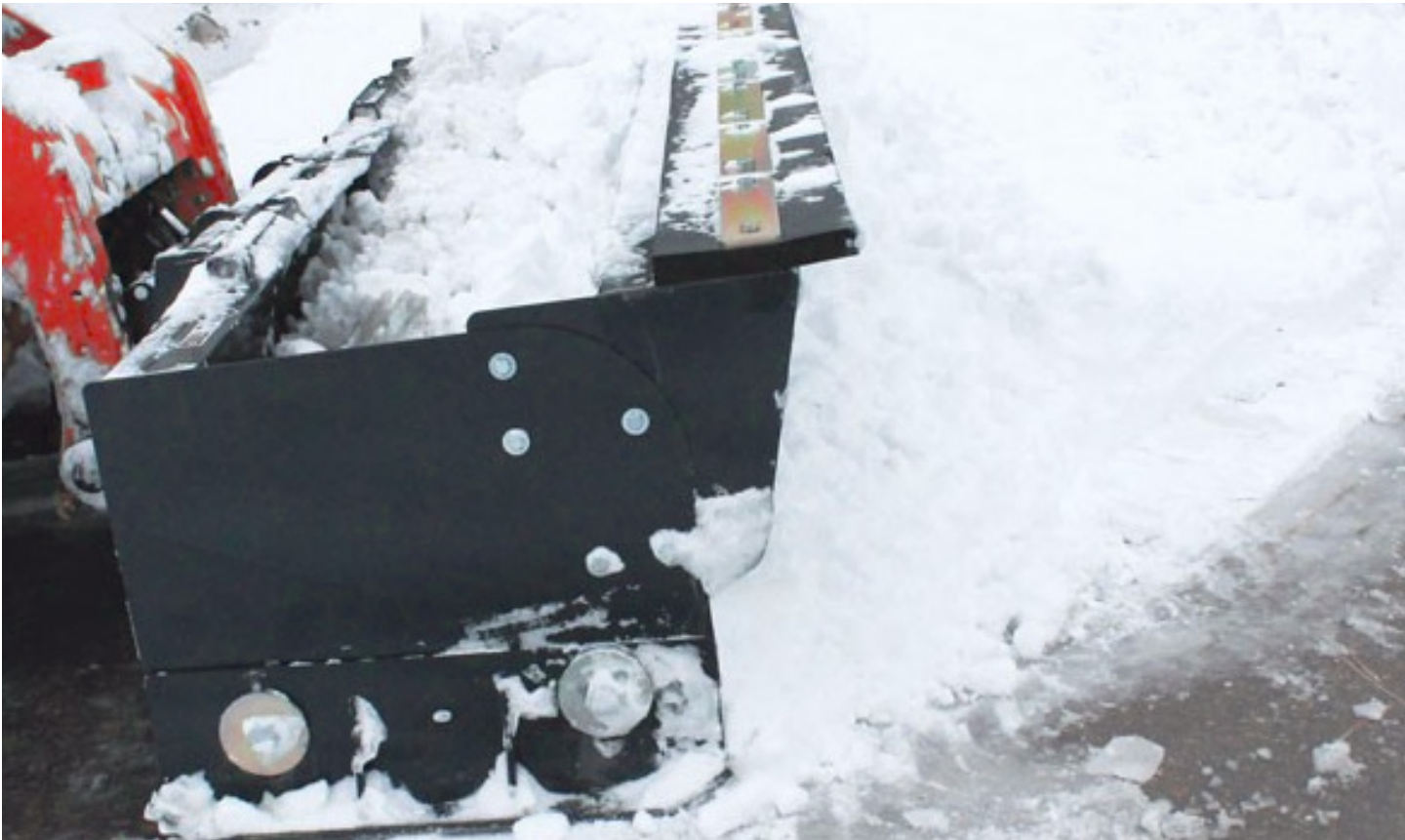
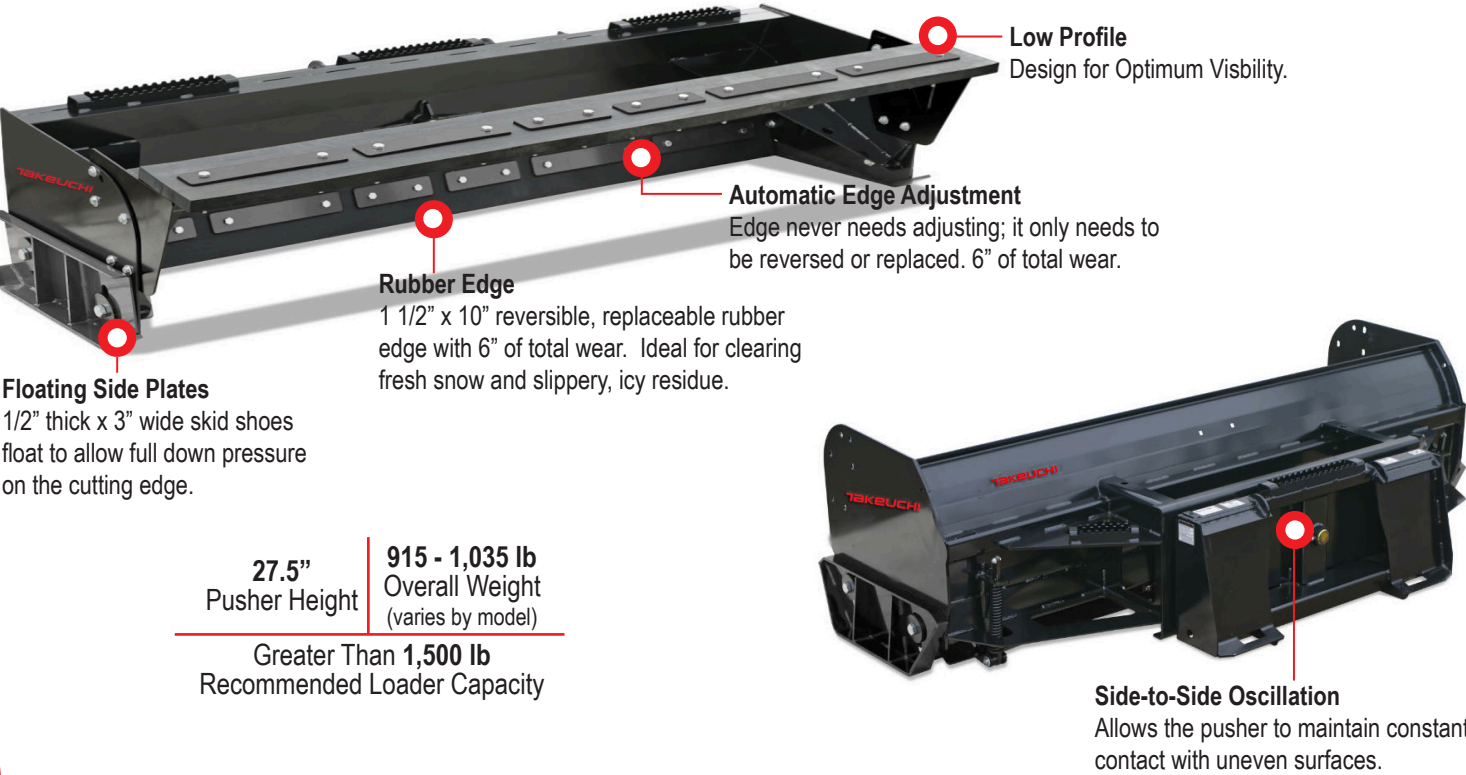
Up to 52 cu. ft.  
Struck Capacity  
(varies by model)

Greater Than 2,400 lb  
Recommended Loader Capacity



# Low Profile Snow Pusher

TLSWP84 / TLSWP96 / TLSWP108



MODEL SPECS	TLSWP84	TLSWP96	TLSWP108
Width: Overall / Inside	92.3" / 86"	104.3" / 98"	116.3" / 110"
Overall Height	27.5"	27.5"	27.5"
Depth: Overall / Inside	39.5" / 30"	39.5" / 30"	39.5" / 30"
Pusher Ocillation	(+/-) 4°	(+/-) 4°	(+/-) 4°
Cutting Edge	1 1/2" x 10" Rubber		
Approximate Weight	915 lb	960 lb	1,005 lb
Recommended Loader Capacity	Greater than 1,500 pounds		

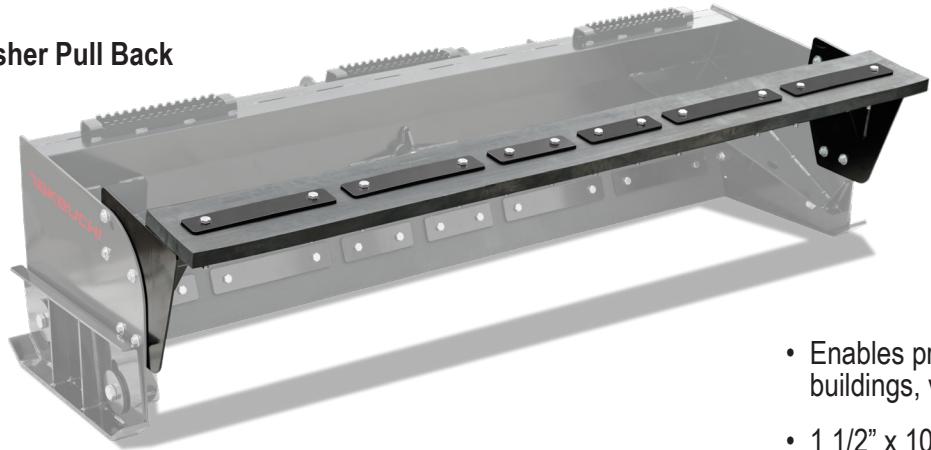
Snow Pusher Rubber Edge Kit	Model	Weight
	TSWP84RK	98 lb
	TSWP96RK	112 lb
	TSWP108RK	126 lb

- 1 1/2" x 10" reversible rubber edge.

Snow Pull Back Rubber Edge Kit	Model	Weight
	TSPP84RK	98 lb
	TSPP96RK	112 lb
	TSPP108RK	126 lb

- 1 1/2" x 10" reversible rubber edge.

## Snow Pusher Pull Back



- Enables precise snow cleanup along buildings, vehicles, etc.
- 1 1/2" x 10" reversible, replaceable rubber edge allows 6" of total wear.

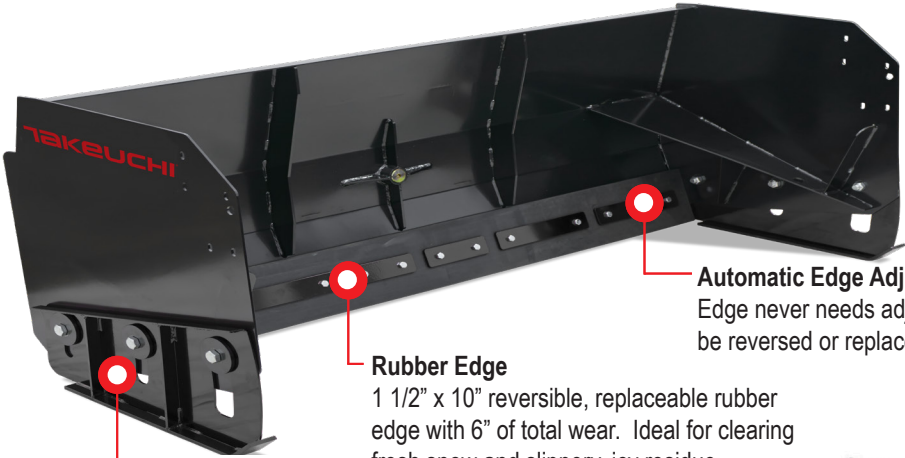
Description	TSP84	TSP96	TSP108
Overall Pull Back Width	88"	100"	112"
Inside Pull Back Width	86"	98"	110"
Cutting Edge	1 1/2" x 10" Rubber		
Approximate Weight	210 lb	235 lb	255 lb

WARNING: Proposition 65 - See back cover for details



# Snow Pusher

TTSWP84 / TSWP96 / TSWP108

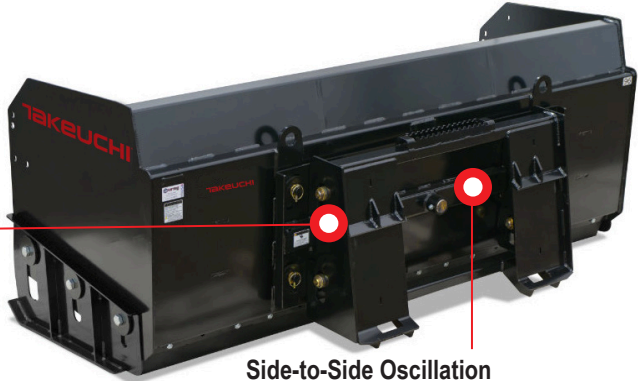


**Floating Side Plates**  
1/2" thick x 3" wide skid shoes float to allow full down pressure on the cutting edge.

**Rubber Edge**  
1 1/2" x 10" reversible, replaceable rubber edge with 6" of total wear. Ideal for clearing fresh snow and slippery, icy residue.

**Automatic Edge Adjustment**  
Edge never needs adjusting; it only needs to be reversed or replaced. 6" of total wear.

**Floating Frame Link**  
Compliments the oscillation and helps the pusher maintain constant contact with uneven surfaces.



**Side-to-Side Oscillation**  
Allows the pusher to maintain constant contact with uneven surfaces.

## Snow Pusher Pull Back



- Enables precise snow cleanup along buildings, vehicles, etc.
- 1 1/2" x 10" reversible, replaceable rubber edge allows 6" of total wear.

Description	TSP84	TSP96	TSP108
Overall Pull Back Width	88"	100"	112"
Inside Pull Back Width	86"	98"	110"
Cutting Edge	1 1/2" x 10" Rubber		
Approximate Weight	210 lb	235 lb	255 lb

40.8" Pusher Height  
1,305 to 1,465 lb Overall Weight (varies by model)  
Greater Than 1,800 lb Recommended Loader Capacity



MODEL SPECS	TSWP84	TSWP96	TSWP108
Width: Overall / Inside	90" / 86"	102" / 98"	114" / 110"
Overall Height	40.8"	40.8"	40.8"
Depth: Overall / Inside	51.2" / 38.3"	51.2" / 38.3"	51.2" / 38.3"
Pusher Oscillation	(+/-) 4°	(+/-) 4°	(+/-) 4°
Frame Link Float	3"	3"	3"
Cutting Edge	1 1/2" x 10" Rubber		
Approximate Weight	1,305 lb	1,365 lb	1,425 lb
Recommended Loader Capacity	Greater than 1,800 pounds		

Replacement Rubber Edge Kit	Model	Weight
	TSWP84RK	98 lb
	TSWP96RK	112 lb
	TSWP108RK	126 lb

- 1 1/2" x 10" reversible rubber edge.

Replacement Pull Back Rubber Edge Kit	Model	Weight
	TSP84RK	98 lb
	TSP96RK	112 lb
	TSP108RK	126 lb

- 1 1/2" x 10" reversible rubber edge.

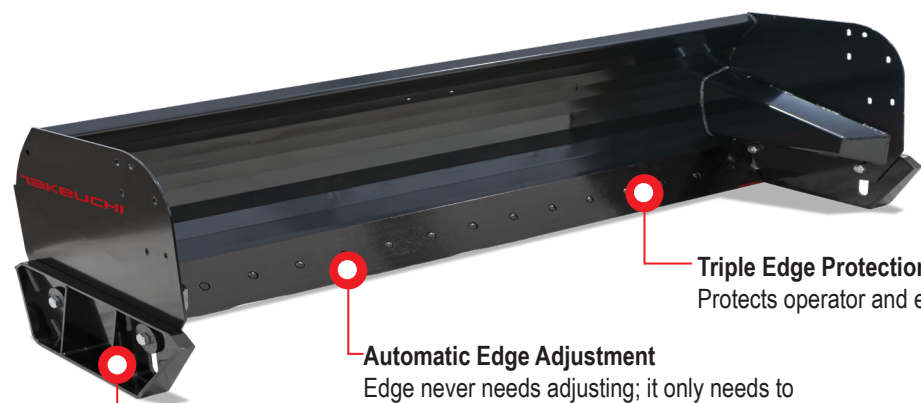


\*NOTE: Snow Pusher and Pull Back of the same width use the same rubber part(s), but different mount hardware.



# Steel Edge Snow Pusher

TTSWP84 / TSWP96 / TSWP108



31.7"  
Pusher Height

1,125 to 1,280 lb  
Overall Weight  
(varies by model)

Greater Than 1,500 lb  
Recommended Loader Capacity

**Triple Edge Protection**  
Protects operator and equipment.

**Automatic Edge Adjustment**  
Edge never needs adjusting; it only needs to be reversed or replaced. 5 1/2" of total wear.

**Floating Side Plates**  
1/2" thick x 3" wide skid shoes float to allow full down pressure on the cutting edge.

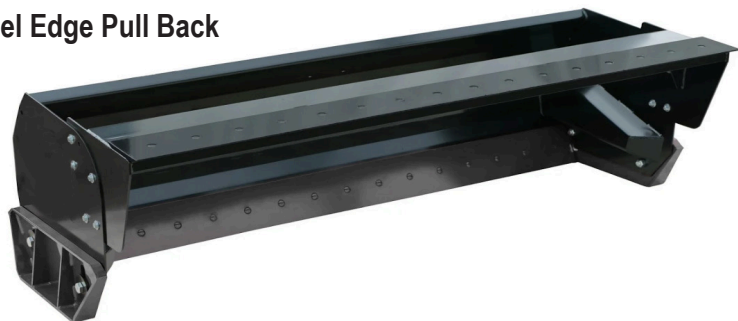


**Side-to-Side Oscillation**  
Allows the pusher to maintain constant contact with uneven surfaces.



MODEL SPECS	TSESP84	TSESP96	TSESP108
Width: Overall / Inside	92.5" / 86.5"	104.5" / 98.5"	116.5" / 110.5"
Overall Height	31.7"	31.7"	31.7"
Depth: Overall / Inside	54.4" / 32.2"	54.4" / 32.2"	54.4" / 32.2"
Pusher Ocillation	(+/-) 4°	(+/-) 4°	(+/-) 4°
Moldboard Thickness	0.19"	0.19"	0.19"
Cutting Edge	5/8" x 8" Steel		
Approximate Weight	1,210 lb	1,275 lb	1,340 lb
Recommended Loader Capacity	Greater than 1,500 pounds		

## Optional Steel Edge Pull Back



- Enables precise snow cleanup along buildings and other objects.
- 5/8" x 8" reversible, replaceable steel edge allows 5 1/2" of total wear.
- Easy installation on Takeuchi Steel Edge Snow Pusher.

Description	TSEP84	TSEP96	TSEP108
Overall Pull Back Width	86"	98"	109.9"
Inside Pull Back Width	85.4"	97.4"	109.4"
Cutting Edge	5/8" X 8" Steel		
Approximate Weight	265 lb	295 lb	325 lb

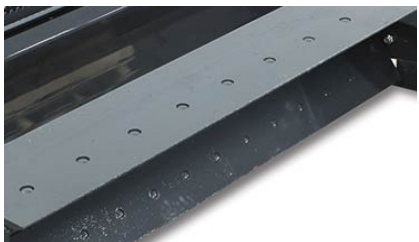
Replacement Steel Edge Kit*	Model	Weight
	TSEPEK84	111 lb
	TSESPEK96	129 lb
	TSESPEK108	149 lb

- 5/8" x 8" reversible double bevel steel edge.

Replacement Pull Back Steel Edge Kit*	Model	Weight
	TSEPK84	111 lb
	TSEPEK96	129 lb
	TSEPEK108	149 lb

- 5/8" x 8" reversible double bevel steel edge.

\*NOTE: Snow Pusher and Pull Back of the same width use the same steel part(s), but different mount hardware.





# TAKEUCHI

## Attachment Catalog Snow Removal

### PROPOSITION 65



**WARNING:** This product can expose you to chemicals including Cadmium, which is known to the State of California to cause cancer and birth defects or other reproductive harm. For more information go to [www.P65Warnings.ca.gov](http://www.P65Warnings.ca.gov).

#### US Headquarters

Pendergrass, Georgia

706.693.3600

[Info@takeuchi-us.com](mailto:Info@takeuchi-us.com)

[takeuchi-us.com](http://takeuchi-us.com)

© 2021 Takeuchi Manufacturing [U.S.], Ltd. All Rights Reserved. Printed in the U.S.A. In accordance with our established policy of continued improvement, specifications and features are subject to change without notice. Pictures may show optional equipment.

FORM: Attachment Catalog, Snow Removal Apr. 2021