

TAKEUCHI TB035

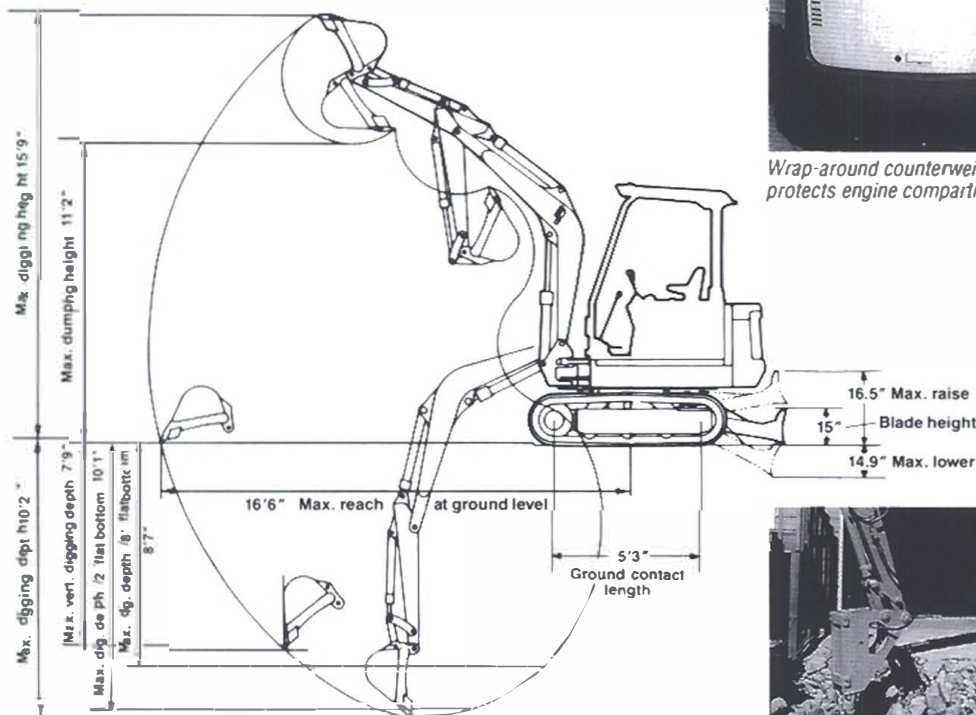
COMPACT EXCAVATOR



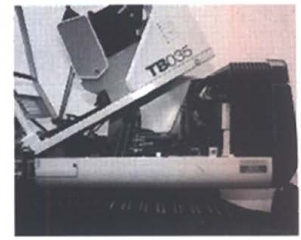
Features:

- Electronic monitoring system notifies operator of vital engine conditions.
- Automatic fuel bleed system eliminates the need for fuel bleeding and priming.
- Synchronized bucket and arm cylinder speeds makes flat bottom trenching easy.
- Two-speed travel increases job site mobility.
- Simultaneous digging functions for faster cycle times.
- Control pattern selector valve for quick change of operating control pattern.
- Emergency shutdown system helps prevent engine damage from low oil pressure or overheating.
- Straight travel while operating other functions means greater maneuverability.
- Half pitch rubber tracks reduce travel vibration.
- Standard dozer blade for light grading and backfilling.

TBO35 SPECIFICATIONS



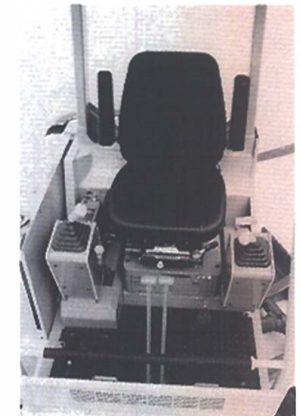
Wrap-around counterweight protects engine compartment.



Tilt-up cab provides quick access to engine, slew reduction unit and main control valve



Two-way auxiliary hydraulics for quick hook-up of attachments.



Deluxe operator's compartment with joystick servo controls for precise and comfortable machine operation.

DIMENSIONS & WEIGHT

| | |
|----------------------------|-------|
| Operating Weight (Lbs.) | 7625 |
| Overall Length (Transport) | 16'6" |
| Overall Width | 5'4" |
| Overall Height | 7'11" |
| Minimum Ground Clearance | 12.0" |
| Tail Swing Radius | 4'8" |

ENGINE

| | |
|------------------------------|---------|
| Manufacturer | Yanmar |
| Horsepower/R.P.M. | 33/2600 |
| Cylinders | 3 |
| Displacement (CID) | 87.0 |
| Fuel Tank Capacity (Gallons) | 8.9 |

PERFORMANCE

| | |
|-------------------------------------|---------|
| Maximum Digging Depth | 10'2" |
| Max. Dump Height | 11'2" |
| Max. Reach at Ground Level | 16'6" |
| Max. Dig. Depth W/2 ft. Flat Bottom | 10'1" |
| Max. Dig. Depth W/8 ft. Flat Bottom | 8'7" |
| Max. Bucket Digging Force (Lbs.) | 7100 |
| Max. Stick Digging Force (Lbs.) | 3870 |
| Travel Speed (MPH) | 1.4/2.7 |
| Gradeability | 30° |

BUCKET

| | |
|-------------------------------|-----|
| Width | 24" |
| Capacity SAE Heaped (Cu. Ft.) | 4.6 |

SWING SYSTEM

| | |
|-------------------------------|---------|
| Boom Swing Angle (Left/Right) | 80°/50° |
| Swing Speed (R.P.M) | 10.7 |

UNDERCARRIAGE

| | |
|------------------------|-----------|
| Traction Drive Type | Planetary |
| Traction Brake Type | Friction |
| Track Rollers Per Side | 4 |
| Shoe Width | 14" |
| Ground Contact Length | 5'3" |
| Ground Pressure (PSI) | 4.0 |

HYDRAULIC SYSTEM

| | |
|---------------------------------|---------------------|
| System Capacity (Gallons) | 26.4 |
| System Operating Pressure (PSI) | 2845 |
| Pump Type | 2 x Piston/1 x Gear |
| Hydraulic Flow (GPM) | 9.2 x 2/5.8 x 1 |
| Auxiliary Hydraulic Flow (GPM) | 15.0 |

Specifications are for canopy, steel track version machines. In accordance with our established policy of continued improvement, specifications and features are subject to change without notice.

TAKEUCHI

SOLD BY:

519 Bonnie Valentine Way
Pendergrass, GA 30567
Phone: 706-693-3600 / Fax: 706-693-3725