

TAKEUCHI TB015

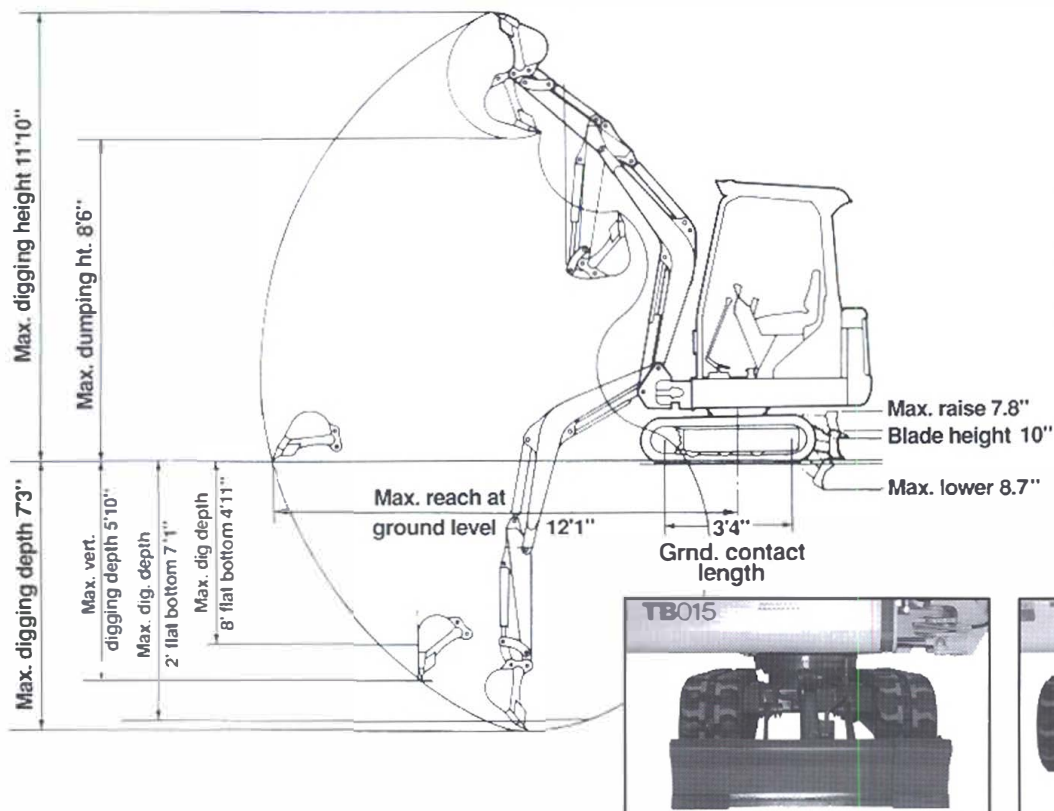
COMPACT EXCAVATOR



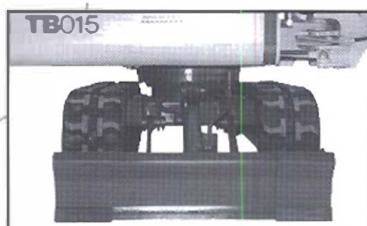
Features:

- Track frame hydraulically adjusts from 38" for working in narrow areas to 51" for greater operating stability.
- Electronic monitoring system notifies operator of vital engine conditions.
- Automatic fuel bleed system eliminates the need for fuel bleeding and priming.
- Synchronized bucket and arm cylinder speeds make flat bottom trenching easy.
- Simultaneous digging functions for fast cycle times.
- Two-way auxiliary circuit routed to the end of the arm for quick hook-up of hydraulic attachments.
- Two-speed travel increases job site mobility.
- Wrap around counterweight protects the engine compartment.
- Adjustable width dozer blade for light grading and backfilling.
- Control Pattern Change Valve for quick change of operating control pattern.
- Optional Extendible Dipper Arm.

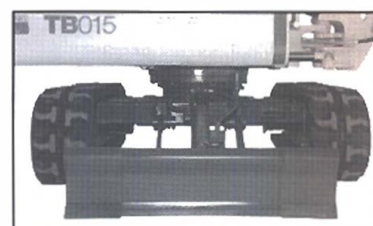
TB015 SPECIFICATIONS



Deluxe operator's compartment with joystick servo controls for precise and comfortable machine operation.



Retracted track frame and blade for working in confined areas.



Extended track frame for operating stability.

DIMENSIONS & WEIGHT

Operating Weight (Lbs.)	3307
Overall Length (Transport)	12'2"
Overall Width	3'2"/4'3"
Overall Height	7'7"
Minimum Ground Clearance	7"
Tail Swing Radius	3'7"

ENGINE

Manufacturer	Yanmar
Horsepower/R.P.M.	16/2550
Cylinders	3
Displacement (CID)	53.7
Fuel Tank Capacity (Gallons)	6.1

PERFORMANCE

Max. Digging Depth	7'3"
Max. Dump Height	8'6"
Max. Reach at Ground Level	12'1"
Max. Dig. Depth W/2 ft. Flat Bottom	7'1"
Max. Dig. Depth W/8 ft. Flat Bottom	4'11"
Max. Bucket Digging Force (Lbs.)	3263
Max. Stick Digging Force (Lbs.)	1830
Travel Speed (MPH)	1.4/2.6
Gradeability	30°

BUCKET

Width	18"
Capacity SAE Heaped (Cu. Ft.)	1.74

SWING SYSTEM

Boom Swing Angle (Left/Right)	90°/50°
Swing Speed (R. P. M.)	8.8

UNDERCARRIAGE

Traction Drive Type	Planetary
Traction Brake Type	Friction
Track Rollers Per Side	3
Shoe Width	9.1"
Ground Contact Length	3'4"
Ground Pressure (PSI)	4.0

HYDRAULIC SYSTEM

System Capacity (Gallons)	7.9
System Operating Pressure (PSI)	2774
Pump Type	Triple Gear
Hydraulic Flow (GPM)	4.1 x 2/2.7 x 1
Auxiliary Hydraulic Flow (GPM)	8.2

Specifications are for rubber track canopy version machines. In accordance with our established policy of continued improvement, specifications and features are subject to change without notice.

TAKEUCHI®

519 Bonnie Valentine Way
Pendergrass, GA 30567

Phone: 706-693-3600 / Fax: 706-693-3700

SOLD BY: